

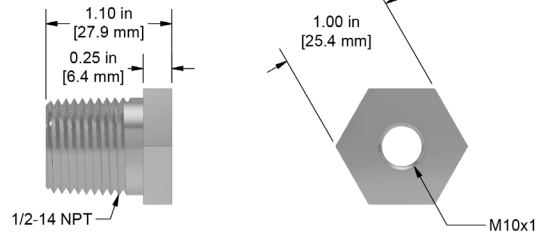
## DM910 Series

Metric Mounting Bushings for  
8mm Proximity Probes



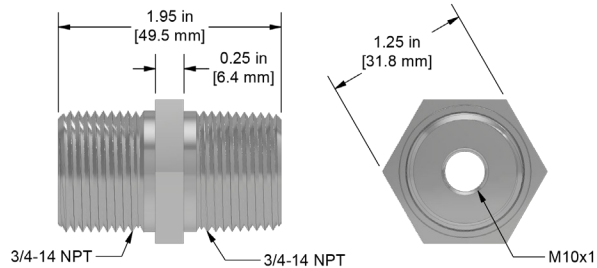
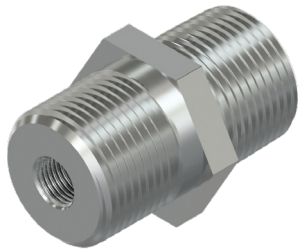
### DM911-1A

**316L Stainless Steel, 1/2-14 NPT Mounting Bushing with M10x1 Threaded Hole**



### DM914-1A

**316L Stainless Steel, 3/4-14 NPT to 3/4-14 NPT Mounting Bushing with M10x1 Threaded Hole**



### DM915-1A

**316L Stainless Steel, 1/2-14 NPT to 3/4-14 NPSM Mounting Bushing with M10x1 Threaded Hole**

